



# Nap1 Polyclonal Antibody

<b>Catalog No</b>	YP-Ab-01891
<b>Isotype</b>	IgG
<b>Reactivity</b>	Human;Mouse;Rat
<b>Applications</b>	WB;IHC;IF;ELISA
<b>Gene Name</b>	AZI2
<b>Protein Name</b>	5-azacytidine-induced protein 2
<b>Immunogen</b>	The antiserum was produced against synthesized peptide derived from human AZI2. AA range:10-59
<b>Specificity</b>	Nap1 Polyclonal Antibody detects endogenous levels of Nap1 protein.
<b>Formulation</b>	Liquid in PBS containing 50% glycerol, 0.5% BSA and 0.02% sodium azide.
<b>Source</b>	Polyclonal, Rabbit,IgG
<b>Purification</b>	The antibody was affinity-purified from rabbit antiserum by affinity-chromatography using epitope-specific immunogen.
<b>Dilution</b>	Western Blot: 1/500 - 1/2000. Immunohistochemistry: 1/100 - 1/300. Immunofluorescence: 1/200 - 1/1000. ELISA: 1/20000. Not yet tested in other applications.
<b>Concentration</b>	1 mg/ml
<b>Purity</b>	≥90%
<b>Storage Stability</b>	-20°C/1 year
<b>Synonyms</b>	AZI2; NAP1; 5-azacytidine-induced protein 2; NF-kappa-B-activating kinase-associated protein 1; Nak-associated protein 1; TILP
<b>Observed Band</b>	48kD
<b>Cell Pathway</b>	Cytoplasm .
<b>Tissue Specificity</b>	Widely expressed (PubMed:14560022). Abundant expression seen in the pancreas and testis (PubMed:14560022).
<b>Function</b>	function:Activates serine/threonine-protein kinase TBK1 and facilitates its oligomerization. Enhances the phosphorylation of NF-kappa-B p65 subunit RELA by TBK1. Promotes TBK1-induced as well as TNF-alpha or PMA-induced activation of NF-kappa-B. Participates in IFN-beta promoter activation via TICAM1.,subunit:Interacts with IKBKE, TBK1 and TICAM1.,tissue specificity:Widely expressed. Abundant expression seen in the pancreas and testis.,
<b>Background</b>	AZI2, or NAP1, contributes to the activation of NFKB (see MIM 164011)-dependent gene expression by activating IKK-related kinases, such as NAK (TBK1; MIM 604834) (Fujita et al., 2003 [PubMed 14560022]).[supplied by OMIM, Mar 2008],



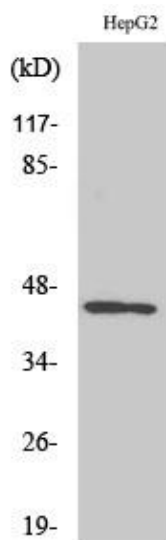
**matters needing attention**

Avoid repeated freezing and thawing!

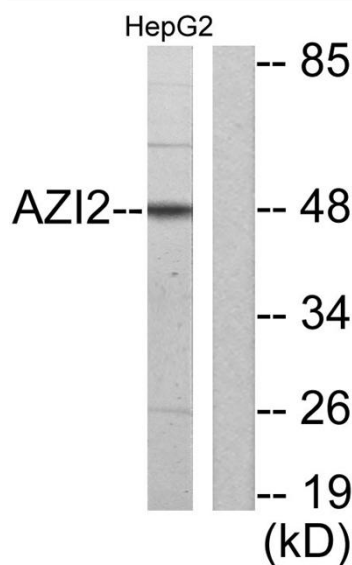
**Usage suggestions**

This product can be used in immunological reaction related experiments. For more information, please consult technical personnel.

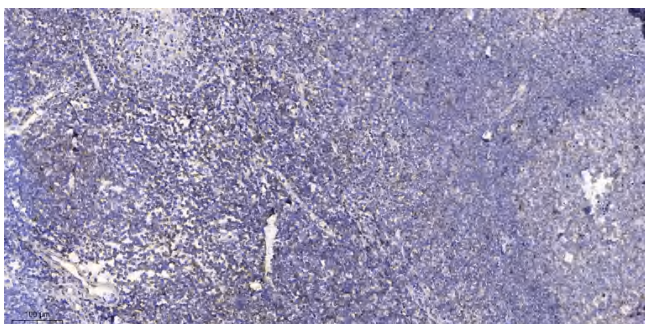
**Products Images**



Western Blot analysis of various cells using Nap1 Polyclonal Antibody



Western blot analysis of lysates from HepG2 cells, using AZI2 Antibody. The lane on the right is blocked with the synthesized peptide.



Immunohistochemical analysis of paraffin-embedded human tonsil. 1, Antibody was diluted at 1:200(4° overnight). 2, Tris-EDTA,pH9.0 was used for antigen retrieval. 3,Secondary antibody was diluted at 1:200(room temperature, 30min).